

How to access Answering Islam if your ISP blocks it

Some ISPs will block IP addresses of servers they find inappropriate. This might mean for you that you cannot access Answering Islam. In this case you can still use a trick to access it anyway. This trick should work in most cases.

A proxy server is a server that will act as a middleman. If you want to visit a site, your browser will tell the proxy server and the proxy server will get the site for you. That way your ISP's blacklists will not match because you're never directly connected to the Answering Islam server. As the trade-off for this is usually a loss of connection speed, you will most likely want to turn off the use of the proxy again after having visited Answering Islam. Therefore we have included a section about how you undo the changes in your browser configuration.

What you have to do...

- Go to a site where open proxies are listed. Here are some good sources for open proxies.¹

- <http://www.samair.ru/proxy>
- <http://www.atomintersoft.com/products/alive-proxy/proxy-list/>
- http://www.proxyblind.org/list_proxy.shtml

- You'll find lists of IP addresses along with port numbers. This looks like

```
168.12.220.88:80
200.103.106.137:6588
195.229.220.133:8080
```

- Now you have to configure your browser to use one of these proxies. It doesn't matter if you choose an anonymous or a transparent proxy.

Below you'll find detailed instructions about the most popular browsers. But even if you use a browser not listed here, this might help you with finding out how to configure your browser to use a proxy.

Configure Internet Explorer

1. choose "Internet Options" in the Menu "Tools"
2. go to the tab "Connections"
3. click on the button "LAN settings"
4. activate "Use a proxy server"
5. copy the IP address with the port number (e.g. 200.103.106.137:6588) from the proxy list to the address field and leave the port field blank
6. click the "Ok" buttons until all the configuration windows are closed again

Configure Netscape/Mozilla

1. choose "Preferences" in the Menu "Edit" (see fig. 2)
2. click on the "+" sign in front of "Advanced" in the list on the left hand side of the window
3. choose "Proxies" from the list (see fig. 2)
4. activate "Manual proxy configuration"
5. copy the IP address (the part in front of the colon, like 200.103.106.137) from the proxy list to the "HTTP Proxy" field and the port number (the part after the colon, e.g. 8080) to the "Port" field
6. click the "Ok" buttons until all the configuration windows are closed again

¹If you can't reach these sites (e.g. because they are also blocked) try search words like "proxy list" and try the hits you get.



Figure 1: Netscape/Mozilla – main menu

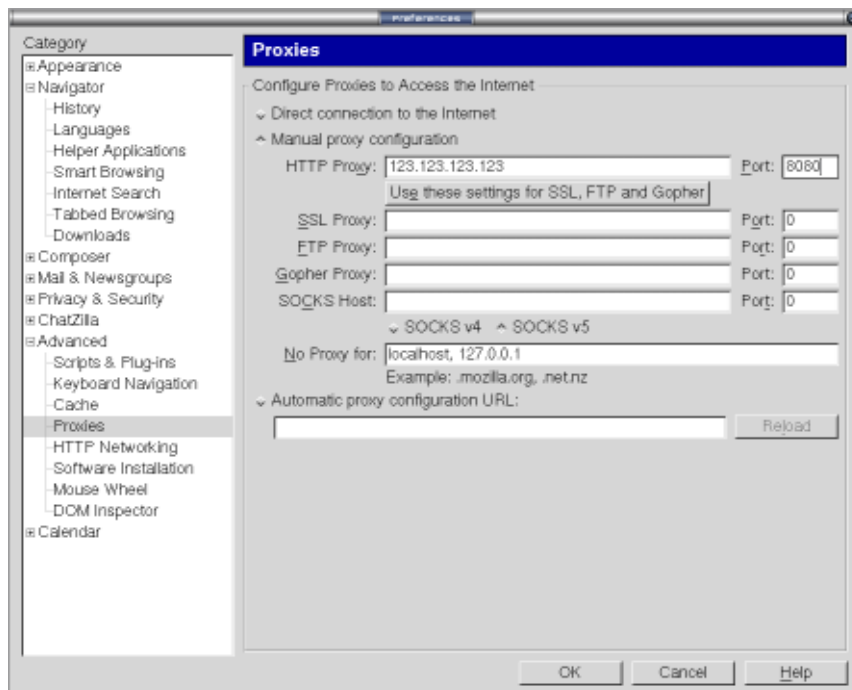


Figure 2: Netscape/Mozilla – proxies

Configure Mozilla Firefox

1. choose “Preferences” in the Menu “Edit” (see fig. 3)
2. choose “General” (see fig. 4)
3. click on the button “Connection settings”
4. activate “Manual proxy configuration” (see fig. 5)
5. copy the IP address (the part in front of the colon, like 200.103.106.137) from the proxy list to the “HTTP Proxy” field and the port number (the part after the colon, e.g. 8080) to the “Port” field
6. click the “Ok” buttons until all the configuration windows are closed again



Figure 3: Firefox – main menu

Configure Opera

1. choose “Preferences” in the Menu “Tools” (see fig. 6)
 2. click on “Network” in the list on the left hand side of the window (see fig. 7)
 3. click on the button “Proxy servers”
 4. activate “HTTP” (see fig. 8)
 5. copy the IP address with the port number (e.g.200.103.106.137:6588) from the proxy list to the “HTTP” field and leave the “Port” field blank
 6. click the “Ok” buttons until all the configuration windows are closed again
- Open a new browser window or tab and try to visit Answering Islam like you usually visit sites with your browser. If you get an error, no reply or the connection is very slow, then start over using a different IP address from the proxy list.

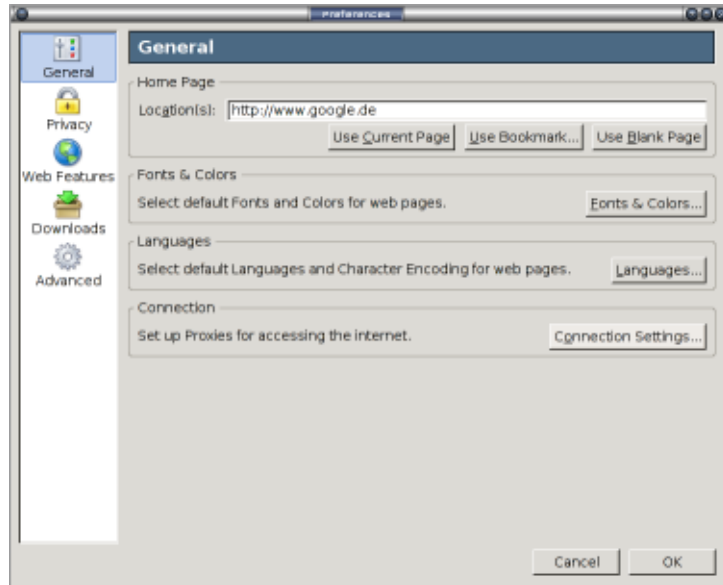


Figure 4: Firefox – preferences

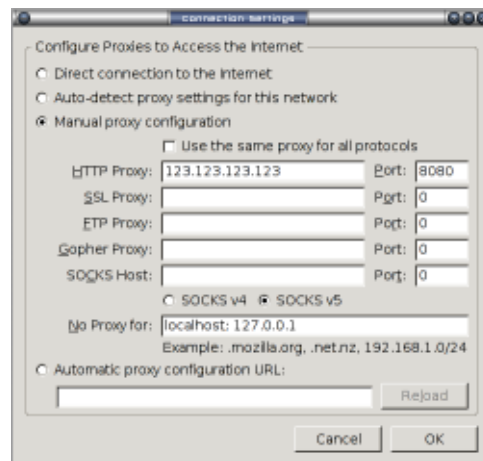


Figure 5: Firefox – connections



Figure 6: Opera – main menu

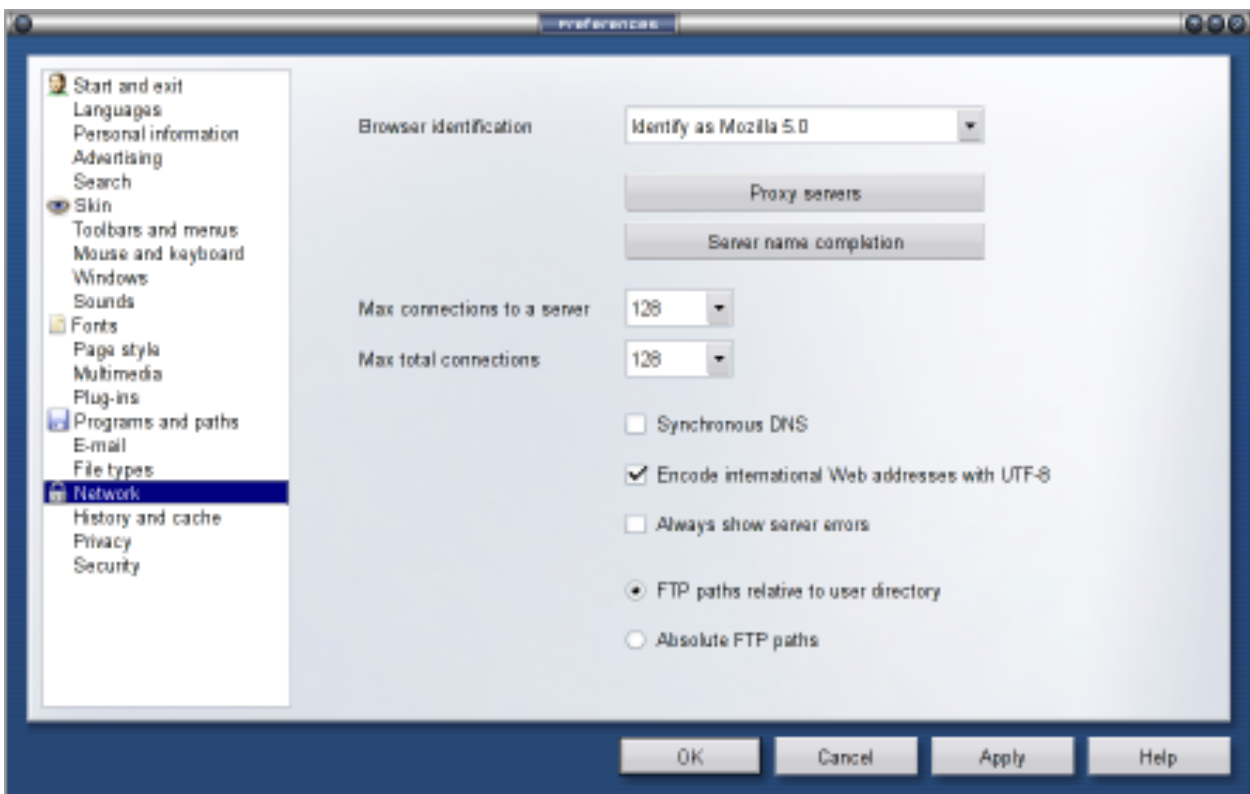


Figure 7: Opera – preferences

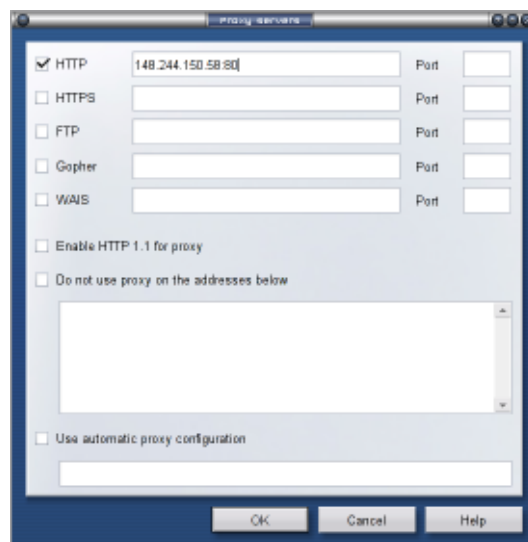


Figure 8: Opera – proxy servers

Undoing your changes

After having visited Answering Islam, you'll probably want to change your configuration again to not use the proxy any more. If you don't do so, you'll probably experience a loss in connection speed when visiting other sites.

In the following you'll find step-by-step instructions about how to turn off the use of the proxy again.²

Configure Internet Explorer

1. choose "Internet Options" in the Menu "Tools"
2. go to the tab "Connections"
3. click on the button "LAN settings"
4. deactivate "Use a proxy server"
5. click the "Ok" buttons until all the configuration windows are closed again

Configure Netscape/Mozilla

1. choose "Internet Options" in the Menu "Tools"
2. go to the tab "Connections"
3. click on the button "LAN settings"
4. activate "Use a proxy server"
5. copy the IP address with the port number (e.g. 200.103.106.137:6588) from the proxy list to the HTTP field and leave the port field blank
6. click the "Ok" buttons until all the configuration windows are closed again

Configure Mozilla Firefox

1. choose "Preferences" in the Menu "Edit"
2. choose "General"
3. click on the button "Connection settings"
4. activate "Direct connection to the Internet"
5. click the "Ok" buttons until all the configuration windows are closed again

Configure Opera

1. choose "Preferences" in the Menu "Tools"
2. click on "Network" in the list on the left hand side of the window
3. click on the button "Proxy servers"
4. deactivate "HTTP"
5. click the "Ok" buttons until all the configuration windows are closed again

²In the given steps you won't delete the proxy's IP address so that you can use it again later. However, you can also delete it from the fields if you want to.